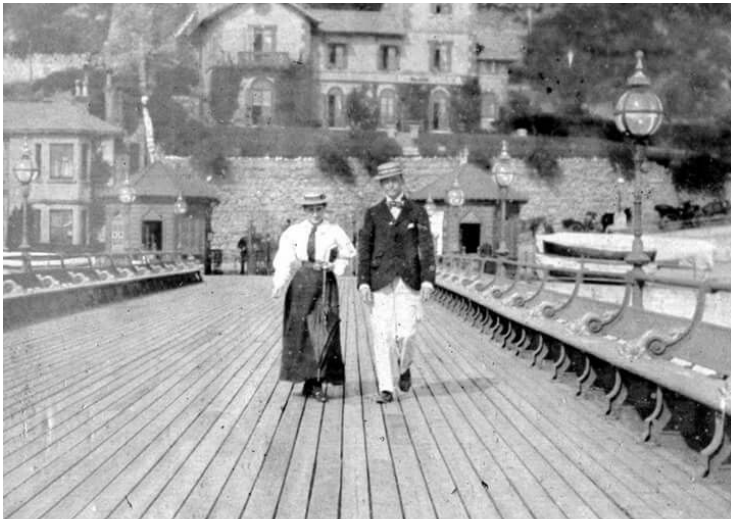


## Historical Development of Ventnor as a Tourist Resort

Up to early 1830s the site of Ventnor consisted of a few thatched fishermen's shacks and a corn mill, with a population of less than 100. During the 1830s an eminent physician named Sir James Clark (Physician to Queen Victoria) extolled the healing qualities of the climate and waters of the site and overnight Ventnor became a health resort and a fashionable destination for the Victorians.

The population rose to 1000 in the 1840s. The railway line was extended to Ventnor through a tunnel built into the chalk downs in 1866, and the Royal Victoria pier was opened in 1877. The population reached 6000 by 1900, the year that a second station, Ventnor West, was opened. The long summers, fine beach, promenade and pier attracted increasing numbers of visitors through the 1920s and 1930s. The Winter Gardens opened in 1937, a place for indoor entertainment for holiday makers during inclement weather.



The Ventnor West station closed in 1952 and the main station closed in 1966. Combined with the increasing popularity of cheap foreign package holidays the town declined as a seaside tourist destination

The main pier was closed for safety reasons in 1981 with only the amusement arcade at the entrance kept open until 1985 when it burnt down. The pier was finally demolished in 1993.